

COVID-19

Because patient care and positioning is our specialty, Denyers have specific products to assist in the recovery of **ICU** COVID-19 patients.

Over the years numerous articles have been written about the effects of Prone Positioning for Patients with Acute Respiratory Failure as seen with COVID-19.

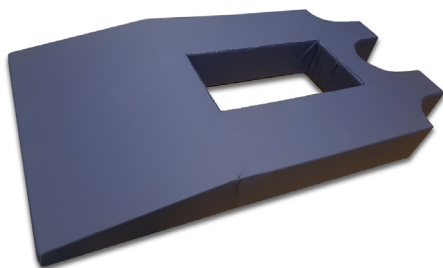
Studies have shown that patients in the Prone Position can improve oxygenation.

Denyers Australian made products can assist with these prone positioning needs.

PROUDLY MADE IN AUSTRALIA



A recent article 'Body positioning may affect lung recruitability in COVID-19-related ARDS' (Pan C, et al. Am J Respir Crit Care Med. 2020;doi:10.1164/rccm.202003-0527LE) dated 30th March 2020 and published in the American Journal of Respiratory and Critical Care Medicine refers to alternating between supine and prone positioning of intubated patients with COVID-19.



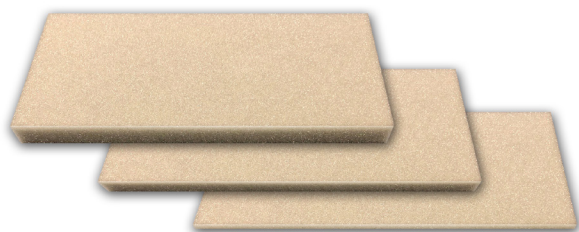
OTA/3010 Denyers Gillespie Pillow

The Denyer manufactured Gillespie Pillow is the ideal solution for intubated patients in ICU that require to be positioned prone. The wedge shape pillow provides a safe and secure alternative to normal pillows and has an opening for the patient's abdomen.



OTA/3100 Single-use foam headrest

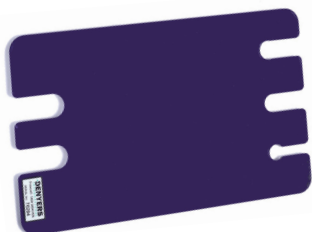
Contoured soft foam support for the forehead and chin for prone positioning. The pillows have a cut out for the eyes and mouth. Outlet holes are located on both the left and right side for flexibility of fitting breathing circuit. Adjustable to 3 heights by layer removal. Individually vacuum packed to optimise storage.



Pressure Relief Positioning Pads

Disposable foam pads ideal for pressure care and to minimise risk of cross infection. Available in 3 thicknesses

OTA/3103	300 x 150 x 25mm	Box of 50
OTA/3102	300 x 150 x 15mm	Box of 50
OTA/3101	300 x 150 x 8mm	Box of 50



OTA/1066 Simple Tube Holder

Simple tube holder that slips easily under mattress to hold breathing and anesthetic tubes. Keeps tubes in place and to avoid congestion. Can accommodate tube diameters of 16mm, 19mm (x 2) and 45mm (x2). Custom sizes available on request.